

**CONSTRUCTION** Tufting 5/64" cut pile  
**STRUCTURE** Tufté 5/64" velours  
**STRUKTUR** Getuftet 5/64" Velours  
**STRUCTUUR** Getuft 5/64" velours

**PILE MATERIAL** 100% PA 6 IMPREL®  
**COMPOSITION DU VELOURS**  
**POLMATERIAL**  
**POOLMATERIAAL**

**PRIMARY BACKING** Non woven PES  
**SUPPORT** Non tissé  
**TRÄGERMATERIAL** Vlies  
**TUFTDOEK** Felt

**SECONDARY BACKING** Action Back or  
**DOSSIER** Ultratex  
**RÜCKEN**  
**TAPIJTRUG**

**PILE WEIGHT** Ca. 630 gr/m<sup>2</sup>  
**POIDS DU VELOURS**  
**POLEINSATZGEWICHT**  
**POOLGEWICHT**

**TOTAL WEIGHT** Ca. 1.650 gr/m<sup>2</sup> (AB)  
**POIDS TOTAL** Ca. 1.700 gr/m<sup>2</sup> (UX)  
**GESAMTGEWICHT**  
**TOTAAL GEWICHT**

**PILE HEIGHT** Ca. 5 mm  
**EPAISSEUR DU VELOURS**  
**POLHÖHE**  
**POOLHOOGTE**

**TOTAL HEIGHT** Ca. 7 mm  
**EPAISSEUR TOTAL**  
**GESAMTHÖHE**  
**TOTALE DIKTE**

**TUFT DENSITY** Ca. 378 000/m<sup>2</sup>  
**NOMBRES DE POINTS**  
**NOPPENZAHL**  
**AANTAL PUNTEN**

**PILE DENSITY** Ca. 0.098 g/cm<sup>3</sup>  
**DENSITÉ DU VELOURS**  
**POLROHDICHTHEIT**  
**POOLDICHTHEID**

**CLASSIFICATION** EN 1307  
**CLASSEMENT** 32 - LC2 (AB)  
**KLASSIFIKATION** 32 - LC3 (UX)  
**CLASSIFICATIE**

**UPEC** U3 P3 E1 C0 only on AB  
**CHAMBORD AB** Certification CSTB: 10/265

**CASTOR CHAIR SUITABILITY** EN 985  
**CHAISE À ROULETTES** A: intensive use  
**STUHLROLLENEIGNUNG**  
**ROLSTOELGESCHIKTHEID**

**STAIR SUITABILITY** EN 1963  
**ESCALIERS** A: intensive use  
**TREPPENEIGNUNG**  
**TRAPPENGESCHIKTHEID**

**PERMANENTLY ANTISTATIC** ISO 6356  
**ANTISTATIQUE PERMANENT** ≤ 2 kV  
**PERMANENT ANTISTATISCH**  
**PERMANENT ANTISTATISCH**

**IMPACT NOISE RATING** ISO 140-8  
**ISOLATION PHONIQUE** ca. 24 dB ΔLw (AB)  
**TRITTSCHALLVERBESSERUNG** ca. 29 dB ΔLw (UX)  
**GELUIDSISOLATIE**

**SOUND ABSORPTION** ISO 354  
**ABSORPTION PHONIQUE** 0.20 αw (AB)  
**SCHALLABSORPTIONSGRAD** 0.30 αw (UX)  
**GELUIDSABSORPTIE**

**THERMAL RESISTANCE** ISO 8302  
**RÉSISTANCE THERMIQUE** 0.13 m<sup>2</sup> K/W (AB)  
**WÄRMEDURCHLASSWIDERSTAND** 0.15 m<sup>2</sup> K/W (UX)  
**WARMTEDOORLAATWEERSTAND**

**FASTNESS TO LIGHT** ISO 105-B02  
**SOLIDITÉ A LA LUMIÈRE** ≥ 5-6  
**LICHTECHTHEIT**  
**LICHTECHTHEID**

**COLOUR FASTNESS TO WATER** EN ISO 105-E01  
**SOLIDITÉ À L'EAU** ≥ 4-5  
**WASSERECHEITHEIT**  
**WATERECHEITHEID**

**FIRE RESISTANCE** EN 13501-1  
**COMPORTEMENT AU FEU** Action Back: Bfl-s1 if glued  
**BRENNVERHALTEN** UX: Cfl-s1  
**BRANDGEDRAG**

**RUBBING FASTNESS** EN ISO 105-X12  
**SOLIDITÉ AU FROTTEMENT** ≥ 4  
**REIBECHTHEIT**  
**WRIJFECHTHEID**

**NUMBER OF COLOURS** 8  
**NOMBRES DE COULEURS**  
**ANZAHL FARBEN**  
**AANTAL KLEUREN**

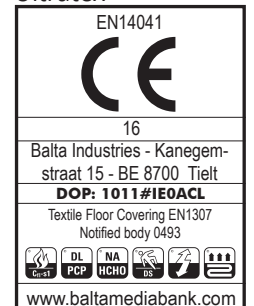
**WIDTH** EN ISO 3018  
**LARGEUR** ca. 400 cm  
**BREITE**  
**BREEDTE**



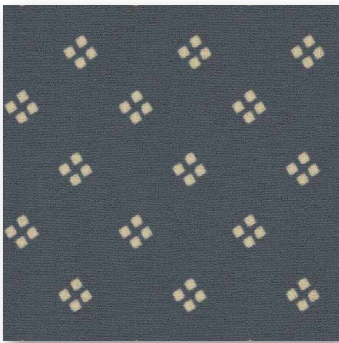
Action Back



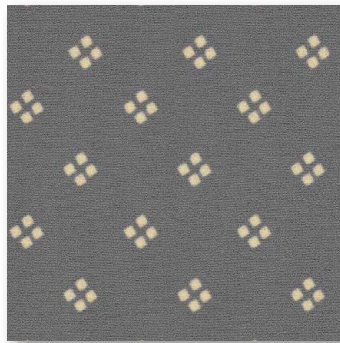
Ultratex



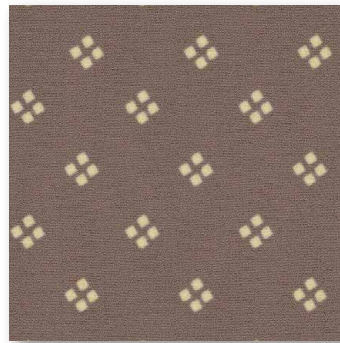
# chambord AB/UX



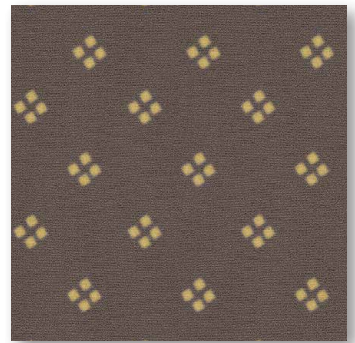
▲ 197



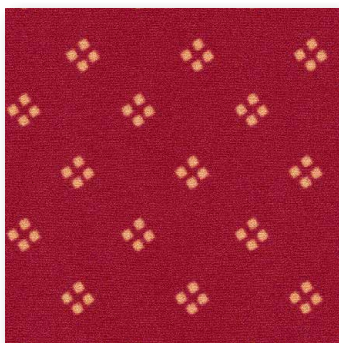
▲ 193



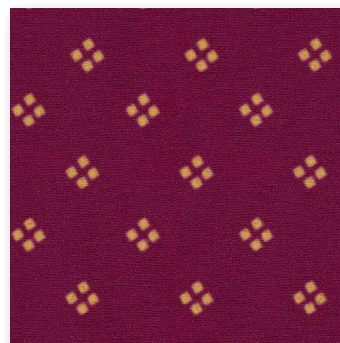
▲ 44



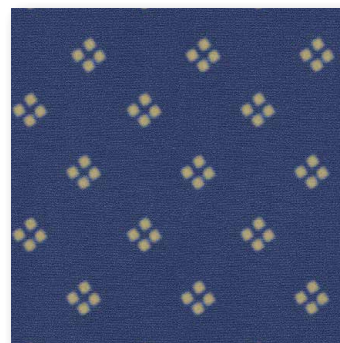
▲ 49



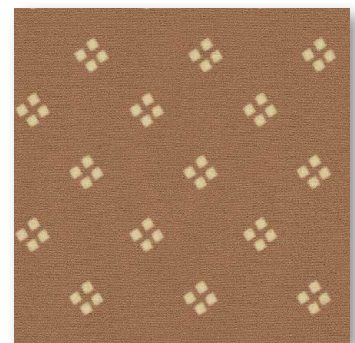
▲ 10



▲ 17



▲ 77



▲ 55

↔ ca. 8 cm ⇕ ca. 8 cm

 **arc edition**  
performance flooring